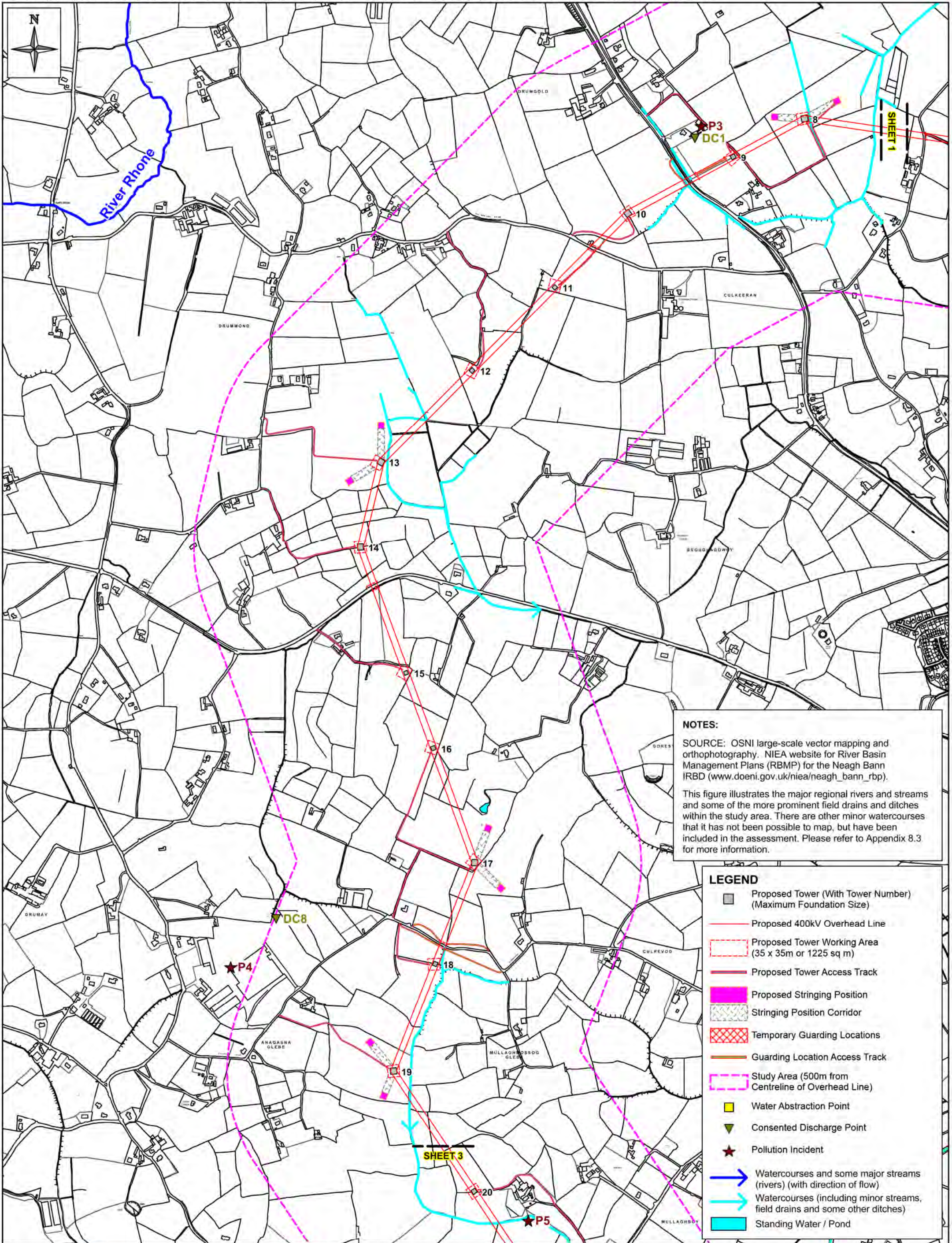


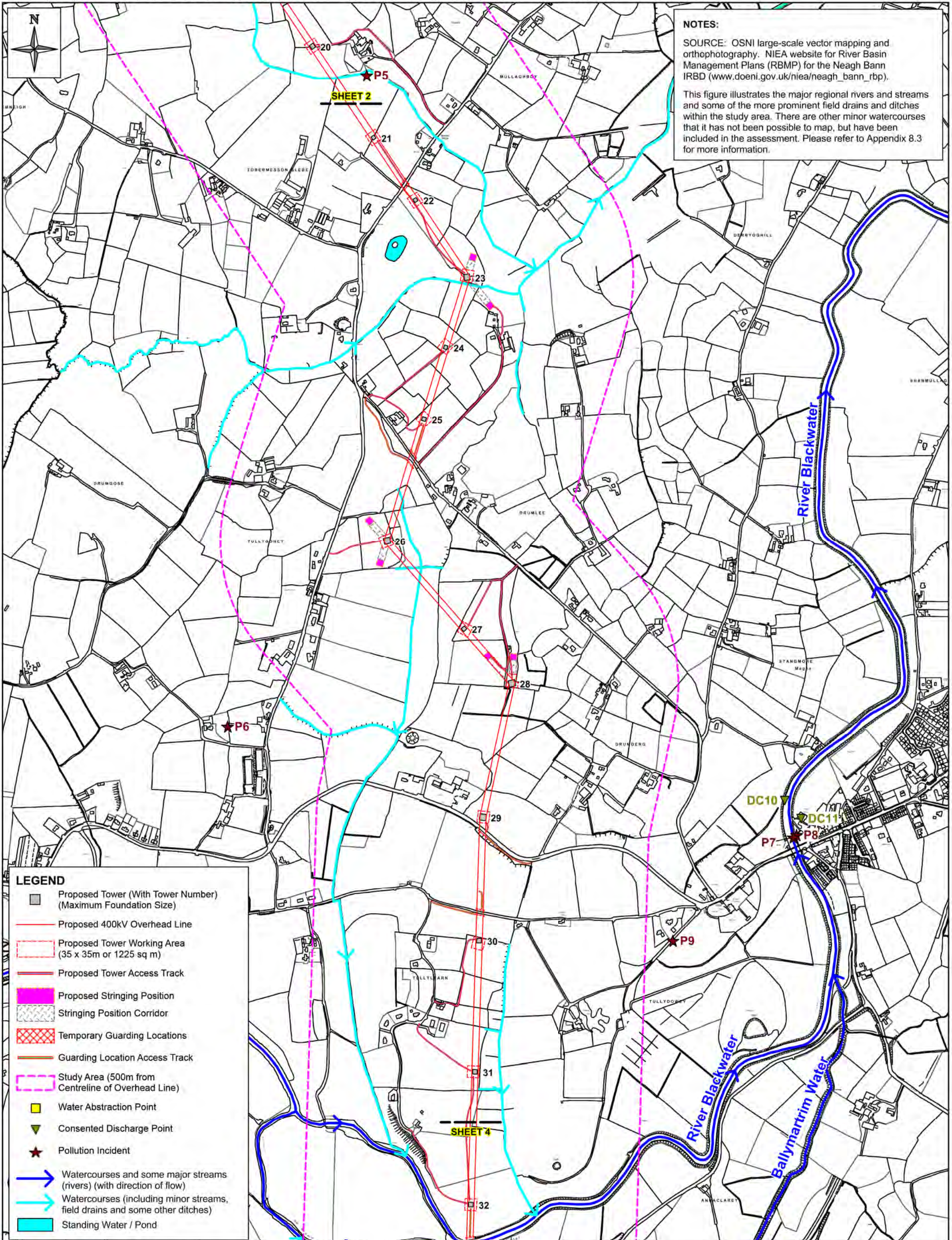
This material is based upon Crown Copyright and is reproduced with the permission of Land & Property Services under delegated authority from the Controller of Her Majesty's Stationery Office, © Crown Copyright & database rights FLA213. Unauthorised reproduction infringes © Crown Copyright and may lead to prosecution or civil proceedings.



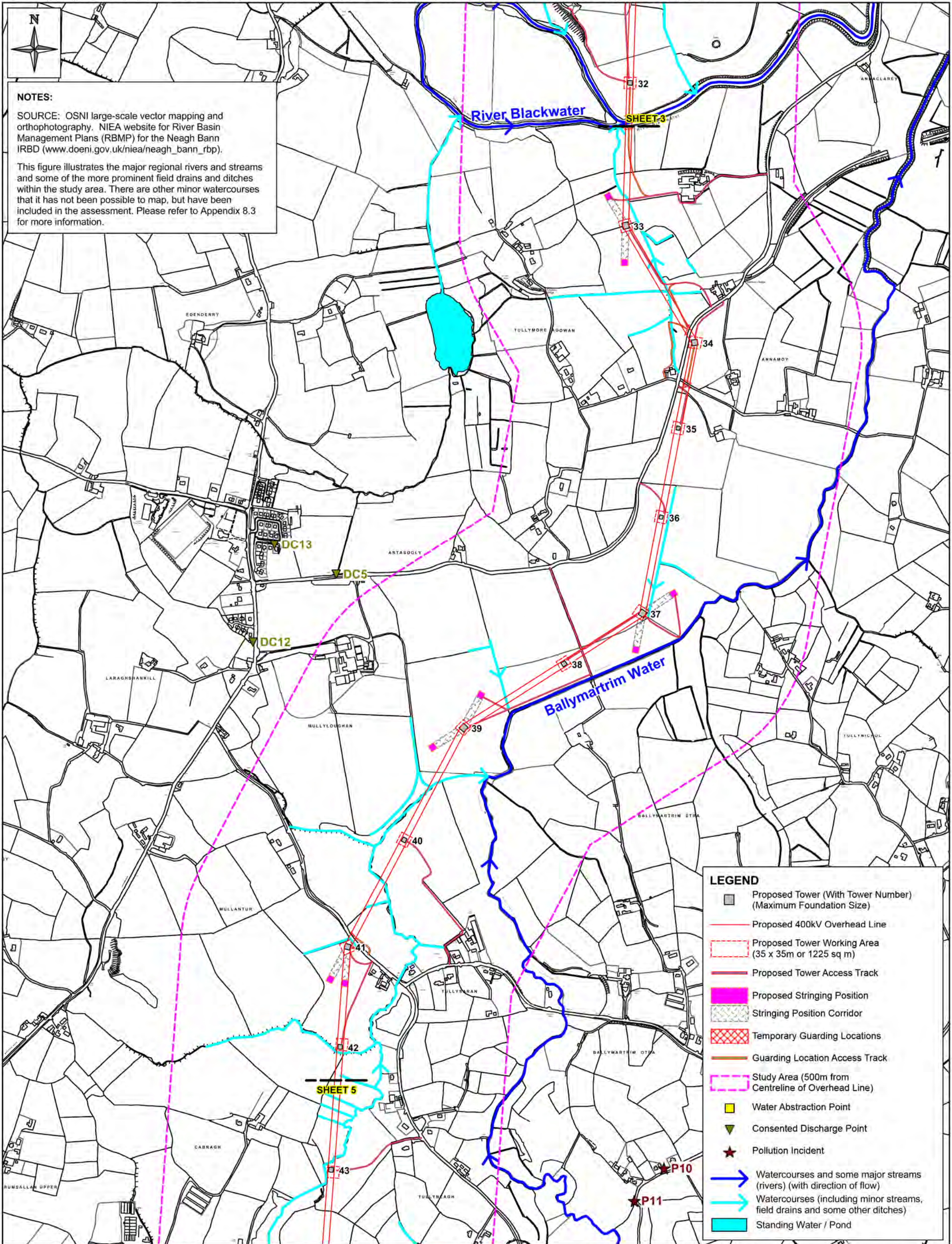


This material is based upon Crown Copyright and is reproduced with the permission of Land & Property Services under delegated authority from the Controller of Her Majesty's Stationery Office, © Crown Copyright & database rights FLA213. Unauthorised reproduction infringes © Crown Copyright and may lead to prosecution or civil proceedings.

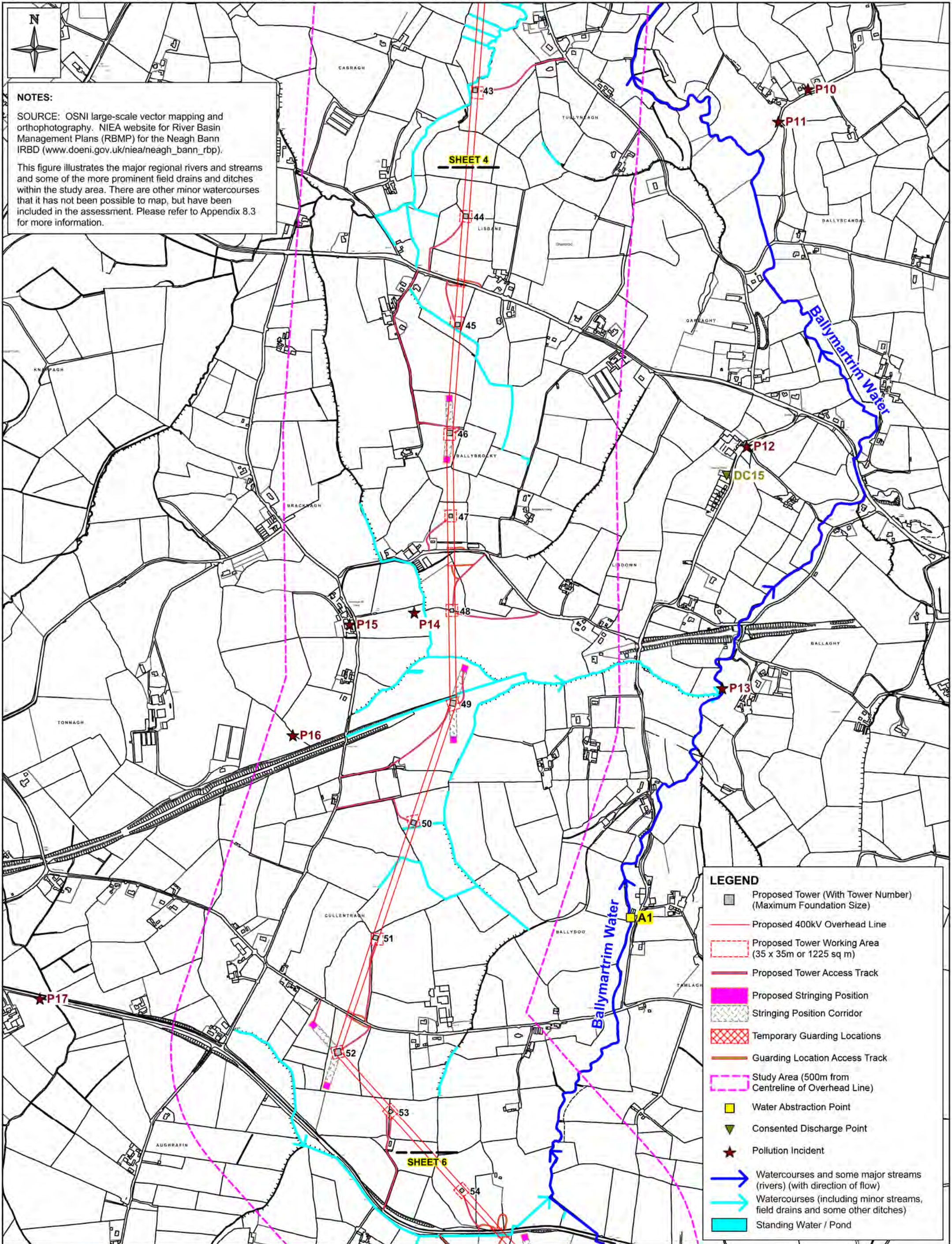






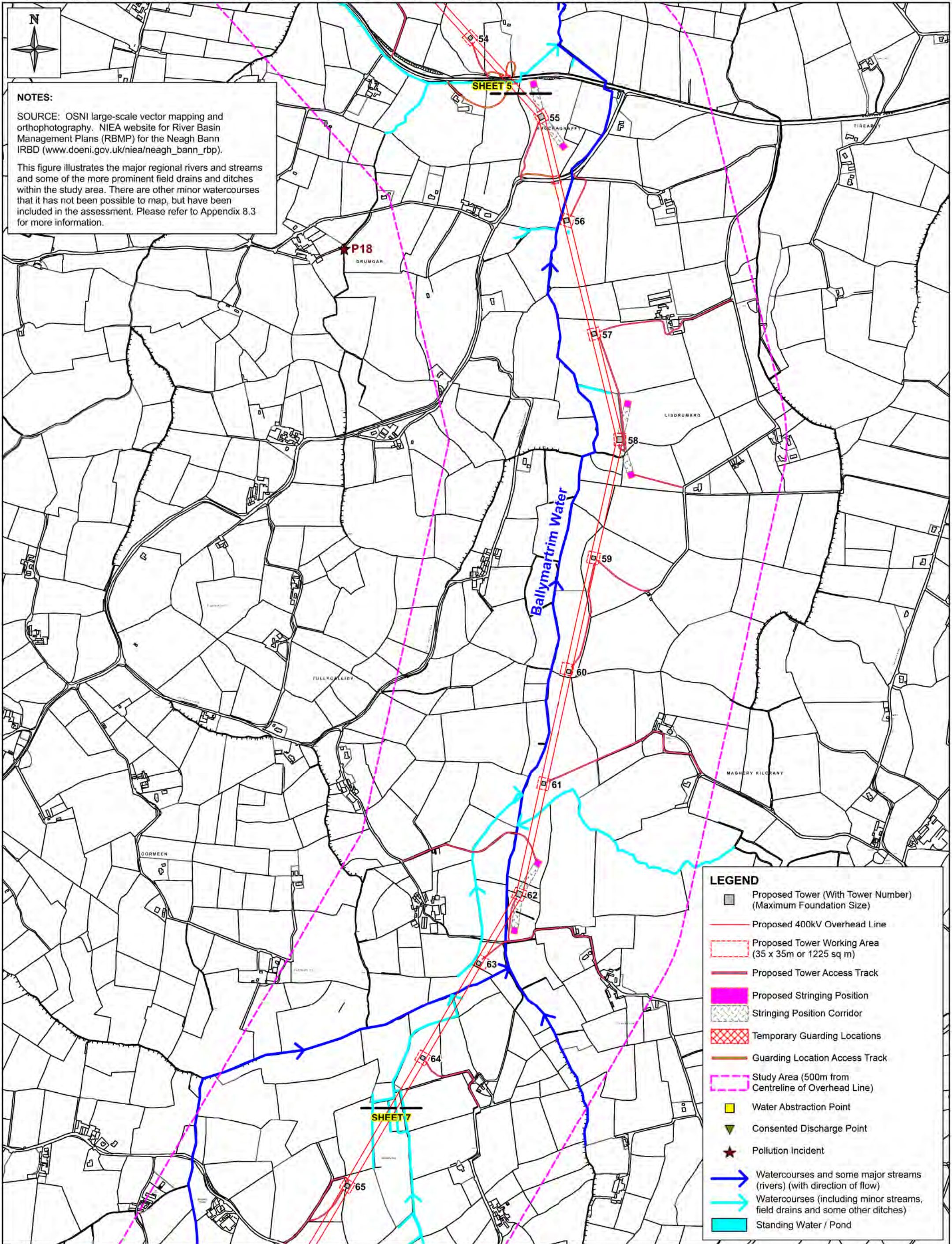




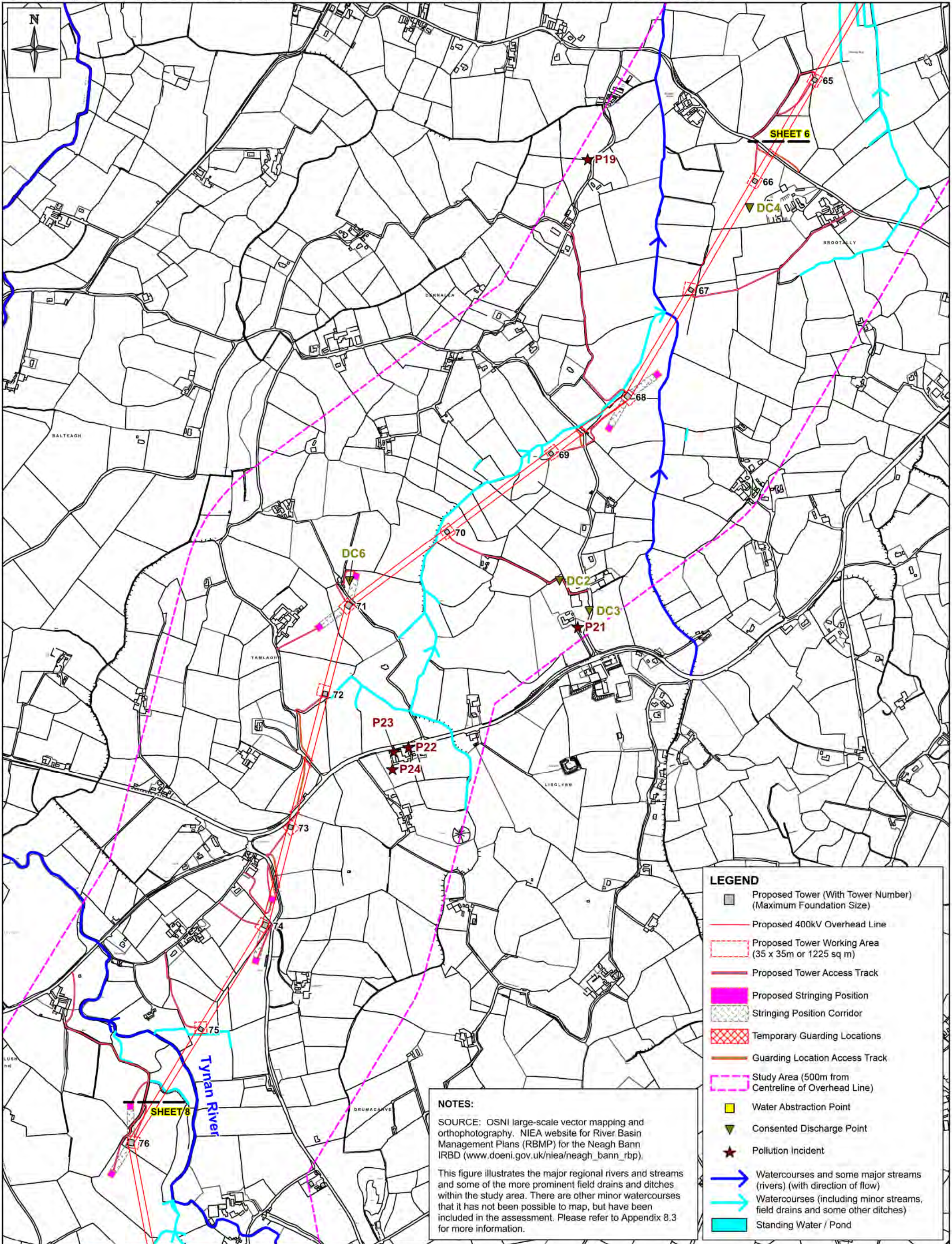


This material is based upon Crown Copyright and is reproduced with the permission of Land & Property Services under delegated authority from the Controller of Her Majesty's Stationery Office, © Crown Copyright & database rights: FLA213. Unauthorised reproduction infringes © Crown Copyright and may lead to prosecution or civil proceedings.

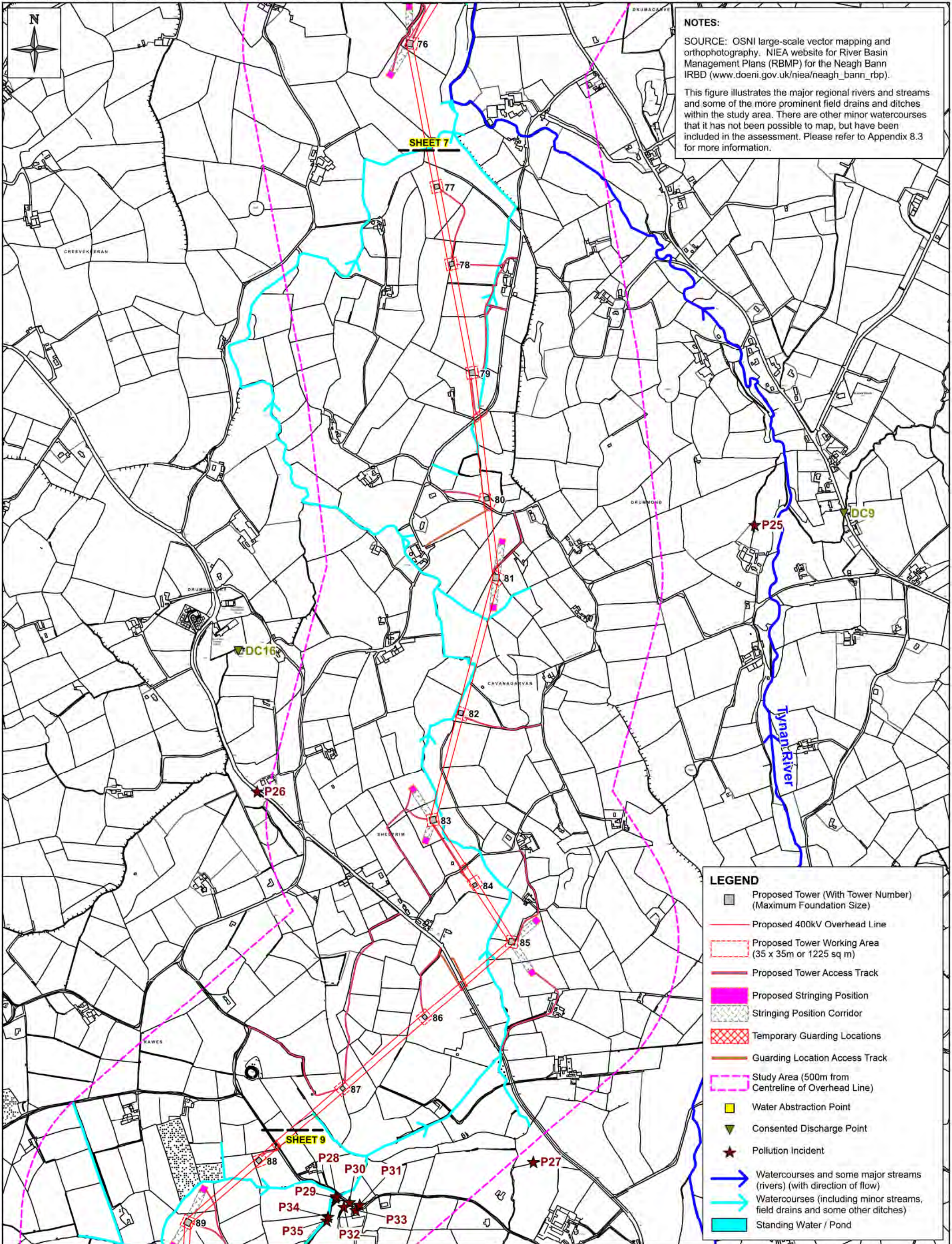






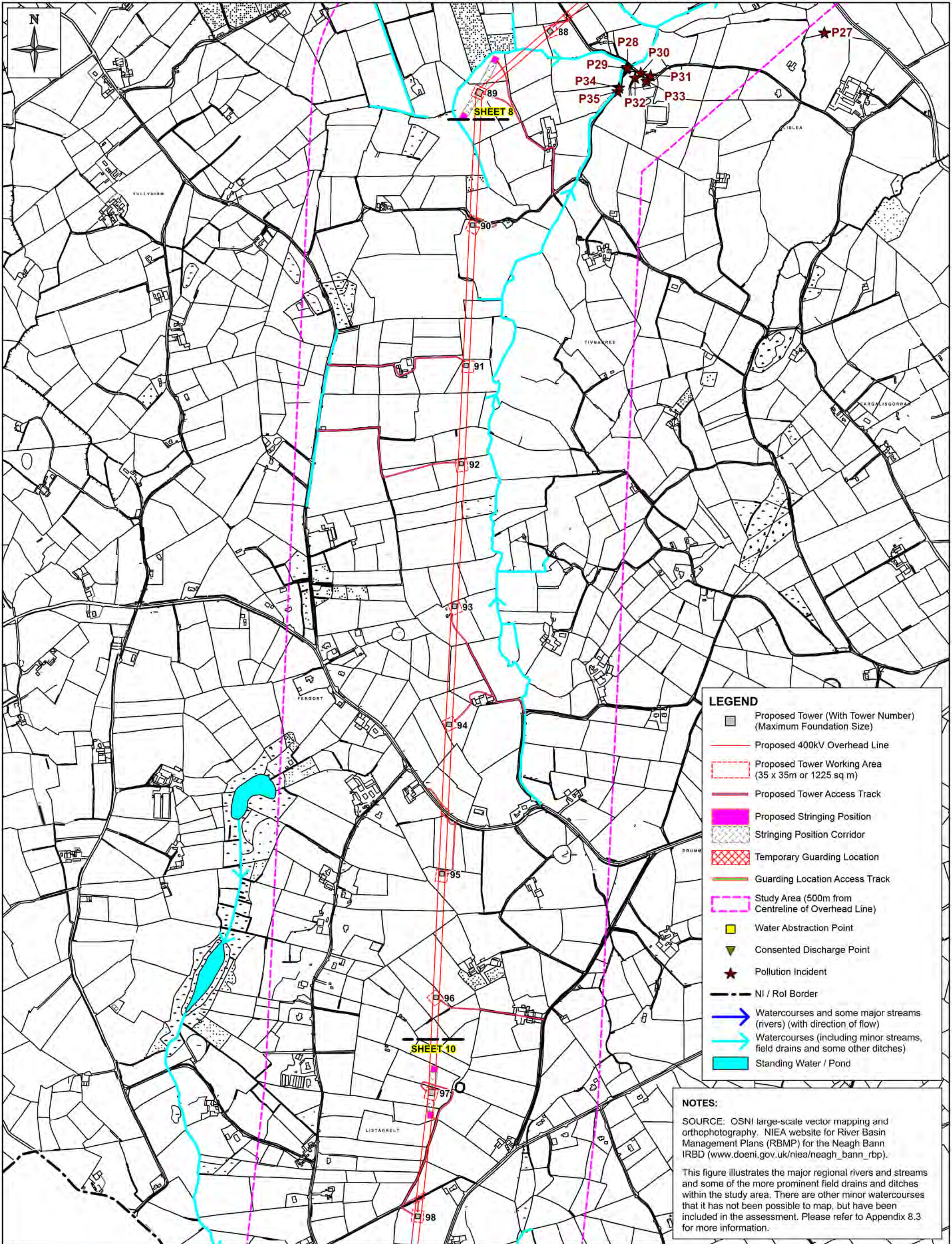




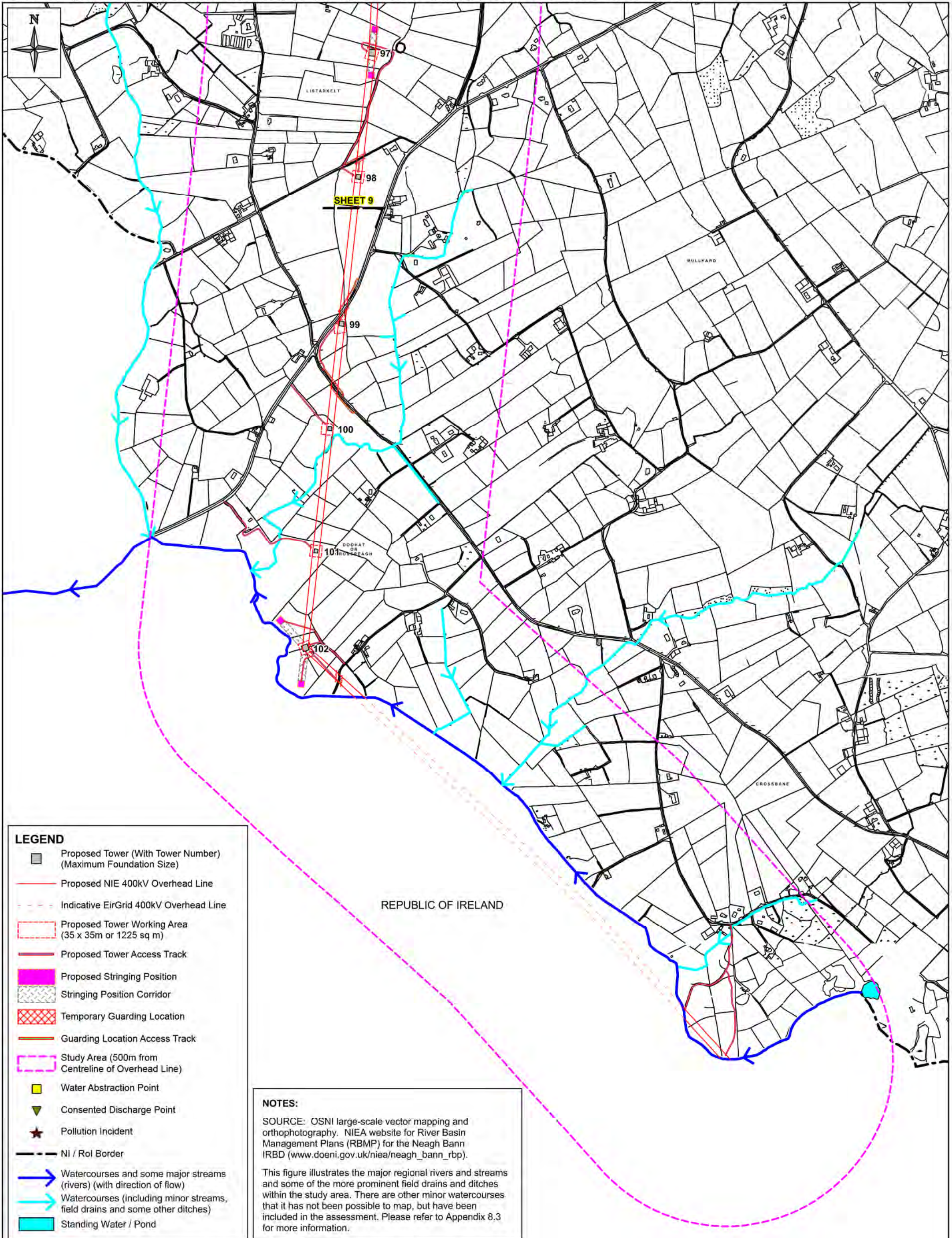


This material is based upon Crown Copyright and is reproduced with the permission of Land & Property Services under delegated authority from the Controller of Her Majesty's Stationery Office, © Crown Copyright & database rights: FLA213. Unauthorised reproduction infringes © Crown Copyright and may lead to prosecution or civil proceedings.









**LEGEND**

- Proposed Tower (With Tower Number)  
(Maximum Foundation Size)
- Proposed NIE 400kV Overhead Line
- Indicative EirGrid 400kV Overhead Line
- Proposed Tower Working Area  
(35 x 35m or 1225 sq m)
- Proposed Tower Access Track
- Proposed Stringing Position
- Stringing Position Corridor
- Temporary Guarding Location
- Guarding Location Access Track
- Study Area (500m from  
Centreline of Overhead Line)
- Water Abstraction Point
- Consented Discharge Point
- Pollution Incident
- NI / ROI Border
- Watercourses and some major streams  
(rivers) (with direction of flow)
- Watercourses (including minor streams,  
field drains and some other ditches)
- Standing Water / Pond

**NOTES:**

SOURCE: OSNI large-scale vector mapping and orthophotography. NIEA website for River Basin Management Plans (RBMP) for the Neagh Bann IRBD ([www.doeni.gov.uk/niea/neagh\\_bann\\_rbp](http://www.doeni.gov.uk/niea/neagh_bann_rbp)).

This figure illustrates the major regional rivers and streams and some of the more prominent field drains and ditches within the study area. There are other minor watercourses that it has not been possible to map, but have been included in the assessment. Please refer to Appendix 8.3 for more information.